



# 2010 Onalaska Show Choir Classic

*Dear Show Choir/Choir Director:*

*We are now planning for our twenty-third annual Onalaska Show Choir Classic and Concert Choir Competition to be held on Friday, January 8th and Saturday, January 9th, 2010. We have a long standing tradition of competition excellence in Onalaska. We are extremely excited about the 2010 competition, and look forward to seeing your show!*

*As always, we offer:*

- ♪ Outstanding judges who will give valuable critiques, both verbal and written.*
- ♪ Immediate feedback from one of our clinicians.*
- ♪ A Concert Choir Competition in the beautiful venue of First Lutheran Church.*
- ♪ Non-competitive critiqued exhibition middle school performances Friday night in the field house.*
- ♪ A user-friendly venue, with a set stage, convenient prop storage, full warm-up stage, and comfortable homerooms.*
- ♪ Large, enthusiastic audiences and choirs from all over the Midwest.*
- ♪ Participation plaques for all performing groups.*

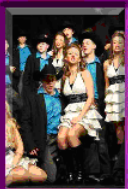
*As you are finalizing your calendars for next year, we hope you will consider joining us. We pride ourselves in being one of the first competitions of the new year, and are a high quality venue*

*where your students can learn and grow. Please complete and return the attached preliminary registration form as soon as possible if you would like to attend.*

*If there is interest, we will consider creating a prep division, unisex division, and/or solo competition at the 2010 Show Choir Classic. Please indicate your preferences on the preliminary registration form. Thank you for your feedback!*

*We look forward to seeing you in January!*

*Chad Lindblom, Director  
Onalaska High School Choirs  
linch@webmail.onalaska.k12.wi.us*





## 2010 Onalaska Show Choir Classic Preliminary Registration Form

---

We would like to attend the Onalaska Show Choir Classic 8-9, 2010  
Please Mail us a registration packet in the fall.

**OR EMAIL DIRECTLY TO:  
OHSCLASSIC@YAHOO.COM**

Name of School \_\_\_\_\_ Director's Name \_\_\_\_\_

Address \_\_\_\_\_

City, State, Zip \_\_\_\_\_ # of Groups Attending \_\_\_\_\_

Email (very important) \_\_\_\_\_

Phone #: School \_\_\_\_\_ Cell \_\_\_\_\_

Interest in:

- Open
- Prep
- Uni-sex
- Solo Comp.



Chad Lindblom  
Onalaska High School Choirs  
700 Hilltopper Place  
Onalaska, WI 54650

Chad Lindblom  
Onalaska High School Choirs  
700 Hilltopper Place  
Onalaska, WI 54650